

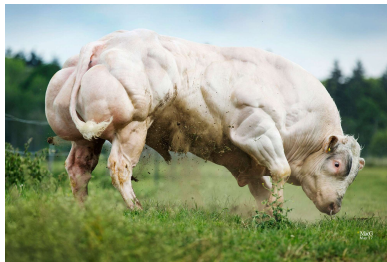


34 m.

976 kg

142 cm

+1



SENATEUR DE MEHOGNE

OCTANE DE MEHOGNE / RAILLEUR DE FONTENA

| | |
|--------------|----|
| Schofthoogte | 78 |
| Bespiering | 90 |
| Type | 86 |
| Beenwerk | 81 |
| Alg. Voork. | 85 |

Totaalscore 88



BEOORDELING

| | | 5 | 10 | 15 | 20 | 25 | 30 | 35 | 40 | 45 |
|--------------------|----|---|----|----|----|----|----|----|----|----|
| Huid | 35 | | | | | | | | | |
| Lengte | 40 | | | | | | | | | |
| Borstbreedte | 33 | | | | | | | | | |
| Bekkenbreedte | 41 | | | | | | | | | |
| Schouder | 37 | | | | | | | | | |
| Rug | 32 | | | | | | | | | |
| Rib | 28 | | | | | | | | | |
| Kruis | 23 | | | | | | | | | |
| Bekkenlengte | 40 | | | | | | | | | |
| Staartinplant | 32 | | | | | | | | | |
| Dijen zij | 41 | | | | | | | | | |
| Dijen achter | 44 | | | | | | | | | |
| Bot | 40 | | | | | | | | | |
| Schouderbreedte | 25 | | | | | | | | | |
| Ruglijn | 23 | | | | | | | | | |
| Voorbenen z.v. | 31 | | | | | | | | | |
| Voork. zij-aanz. | 27 | | | | | | | | | |
| Achterbenen z.a. | 23 | | | | | | | | | |
| Achterk. zij-aanz. | 25 | | | | | | | | | |
| Spronggewricht | 29 | | | | | | | | | |
| Beweging | 22 | | | | | | | | | |
| Schofthoogte | 28 | | | | | | | | | |

INDEX GÉNOMIQUE SUR LA COTATION LINÉAIRE FR_FR

| | Idx | R ² | Orig. fr_FR |
|------------------|-----|----------------|-------------|
| Huid | 117 | 93 | G |
| Lengte | 102 | 94 | G |
| Borstbreedte | 106 | 94 | G |
| Bekkenbreedte | 102 | 96 | G |
| Schouder | 104 | 96 | G |
| Rug | 108 | 96 | G |
| Rib | 98 | 95 | G |
| Kruis | 106 | 96 | G |
| Bekkenlengte | 101 | 93 | G |
| Staartinplant | 101 | 95 | G |
| Dijen zij | 104 | 97 | G |
| Dijen achter | 103 | 97 | G |
| Bot | 120 | 94 | G |
| Schouderbreedte | 124 | 85 | P |
| Ruglijn | 82 | 92 | G |
| Voorbenen z.v. | 89 | 87 | P |
| Achterbenen z.a. | 94 | 86 | P |
| Spronggewricht | 118 | 94 | G |