

54BS561 Hilltop Acres BV

JESSE ET *TM

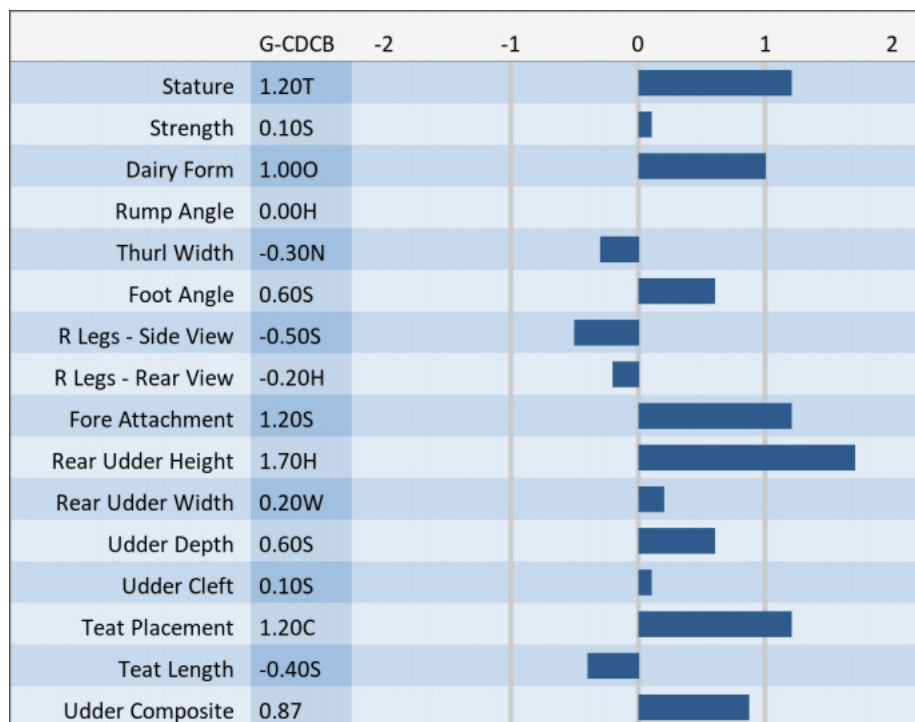
840003132647435 aAa: 315 Beta Cas: A1/A2 Kappa Casein: BB
 Born: 08/14/15

Proven Sires BIVER X TD X DYNASTY

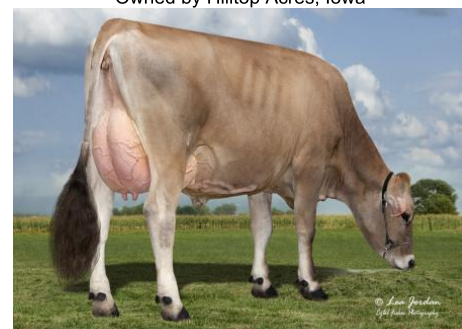
08/2021 G-CDCB PERFORMANCE			
MILK +615	FAT +18 / -0.03%	PROTEIN +31 / +0.04%	PPR 90
PROD. 85%R 32 DTRS/14 HRDS TYPE 78%R			
PL +1.3	UDC +0.87	SCS 3.12	TYPE +0.50
Milking Speed 101		Conception (SCR) -0.5	
Cow Livability +1.4			
CE 3.3%	NM\$ \$280	DPR -0.6	MOB 0.0

MATING GUIDE	
+Fore Udder	
+Udder Depth & Cleft	
+Foot Angle	
+Rear Udder Height & Width	
-Rear Legs - Straight & Rump Angle - Level	

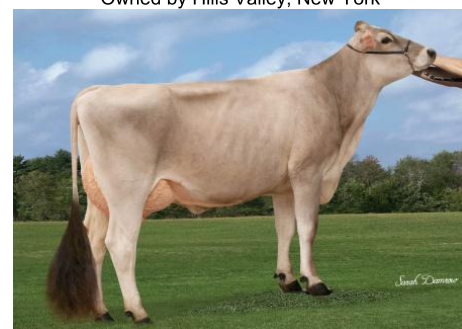
Sire: Scherma Blooming Biver *TM
Dam: Hilltop Acres TD Jess ET "2E 91 E 91 MS"
 Lifetime: 2,247D 208,730M 9,363F 7,750P
MGS: Webster Ridge TD ET *TM
MGD: Hilltop Acres DTY Jazzy ET "3E 91 E 91 MS"
 Lifetime: 2,704D 229,950M 11,756F, 9,019P



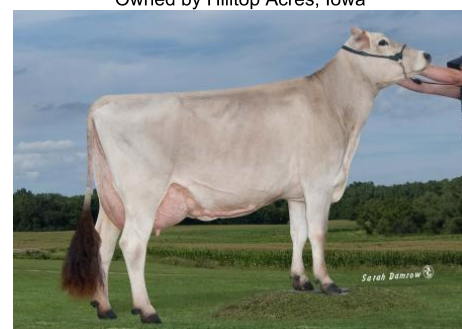
Hilltop Acres Jesse Darma
 Owned by Hilltop Acres, Iowa



Hills Valley Jesse Brysha
 Owned by Hills Valley, New York



IE Hilltop Acres Jesse Wendy
 Owned by Hilltop Acres, Iowa



Dam: Hilltop Acres TD Jess '2E 91 E 91 MS'
 2-07 324d 3x 26,860 4.5 1,201 3.4 909
 3-07 365d 3x 36,430 4.6 1,686 3.7 1,354
 4-11 326d 3x 34,080 4.3 1,471 3.8 1,280
 5-11 365d 3x 31,140 4.4 1,371 3.7 1,167
 7-05 365d 3x 34,570 4.5 1,549 3.8 1,315
 Lifetime: 2,247d 208,730m 9,363f 7,750p
 Dam of 54BS561 JESSE

NEW GENERATION GENETICS
 www.brownswiss.com
 (920) 568-0554
 E-mail: info@brownswiss.com