



Associazione Nazionale Allevatori Bovini Italiani Carne

anabic



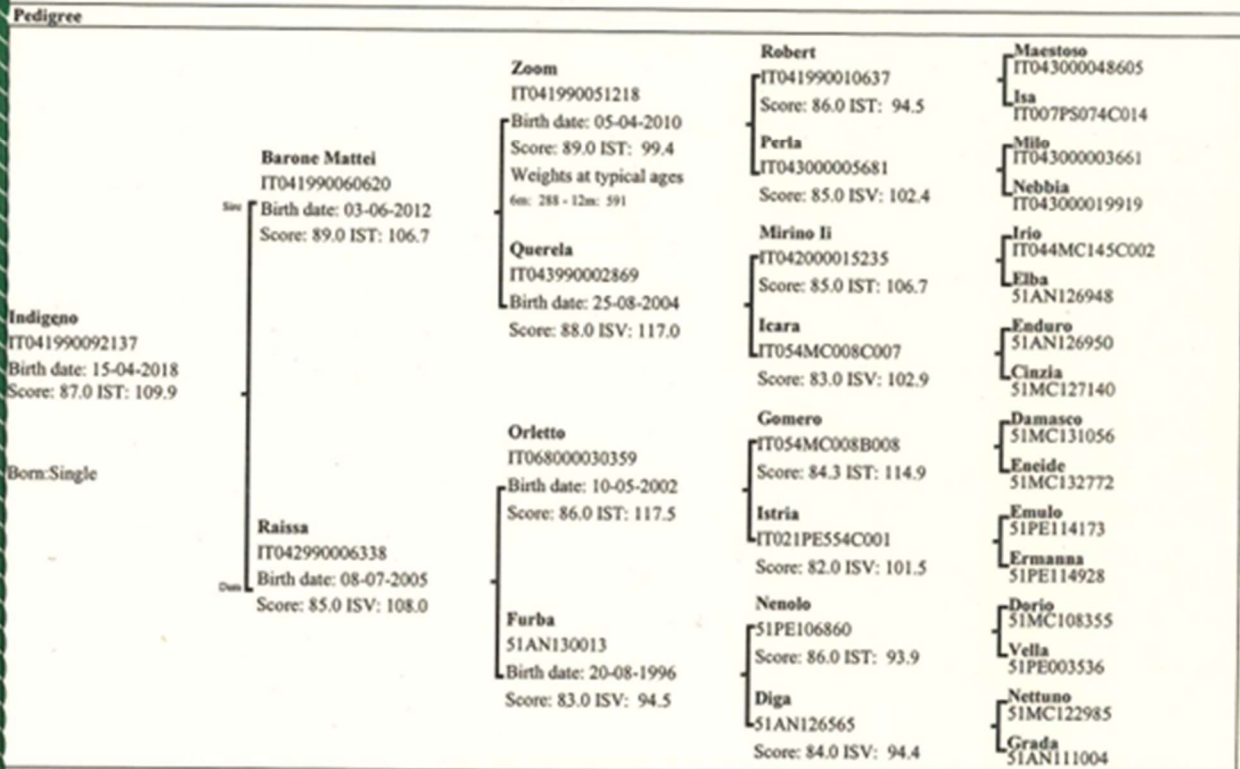
International Semen Pedigree

N. 122569

Breed	Name	Ear Tag	Gender	Birth Date
Marchigiana	Indigeno	IT041990092137	M	15-04-2018

Breeder	RASCHINI LORENZO (PS)	
Owner	C. TORI CHIACCHIERINI (PG)	

Genetic Indexes	Bull Selection Index: 109.8	Accuracy: 61
-----------------	-----------------------------	--------------



Ratings				Muscle Development								Dimensions						
Breed	Muscle	Dimens.	Legs	Withers	Shoulders	Back	Loins	Rump	Thighs	Buttocks	Buttocks	Height	Trunk	Chest	Chest	Hip	Inch	Rump
Traits	Devl.		struct.	width	Convex.	Width	Width	Convex.	Width	Convex.	Length	5	5	4	5	5	5	5
M	M	O	B	4	4	4	3	4	4	4	3							
Score				Legs and Structure								Fineness		Rep. Char.				
87				Rump	Top	Fore	Legs	Hind	Legs	Pattern	Hooves	Skeleton	Skin	Udder	Teat.			
				Angle	Line	Front	Side	Side	Angle	Direction	2	3		4				
				2	3	3	3	2	2	3	3							

Parentage Verification			
DNA	Blood Groups	Sire	Dam
Genotype Deposited		Qualify	Qualify

The undersigned certifies that the particulars required by Article 2 of Commission Decision 2005/379/EC are contained in the documents attached: delivery note, animal health certificates.
Pedigree certificate issued in accordance with Commission Decision 2005/379/EC for intra-Community trade
The results of genetic test are available on the following web site: www.anabic.it

Date of Issue: 27-06-2019



CENTRO GENETICO E UFFICIO CENTRALE DEL LIBRO GENEALOGICO DELLE RAZZE MARCHIGIANA, CHIANTINA, ROMAGNOLA, MAREMMANA, ROSOLICA
Strada del Vio Viscioloso, 21 - 06132 S. Martino in Colle - Perugia - Tel. +39 075.807411 - Fax +39 075.807598
Ente morale D.P.R. n. 679 del 6-6-1961 - Codice Fiscale 80130390588 - Partita Iva 0189752073
www.anabic.it - e-mail: anabic@anabic.it