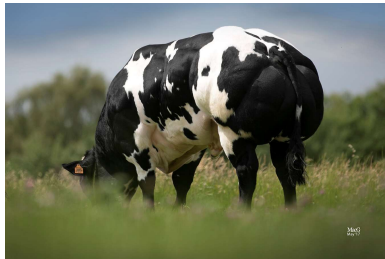




36 m.

1054 kg

143 cm ⁺¹



DODOU DE ST. REMACLE

BARYTON DE ST. REMACLE / LEONARDO DE LA PLATTE

| | |
|--------------|----|
| Schofthoogte | 88 |
| Bespiëring | 90 |
| Type | 84 |
| Beenwerk | 88 |
| Alg. Voorb. | 85 |

Totaalscore 89



BEOORDELING

| | | 5 | 10 | 15 | 20 | 25 | 30 | 35 | 40 | 45 |
|--------------------|----|---|----|----|----|----|----|----|----|----|
| Huid | 30 | | | | | | | | | |
| Lengte | 40 | | | | | | | | | |
| Borstbreedte | 30 | | | | | | | | | |
| Bekkenbreedte | 42 | | | | | | | | | |
| Schouder | 38 | | | | | | | | | |
| Rug | 38 | | | | | | | | | |
| Rib | 22 | | | | | | | | | |
| Kruis | 25 | | | | | | | | | |
| Bekkenlengte | 39 | | | | | | | | | |
| Staartinplant | 22 | | | | | | | | | |
| Dijen zij | 40 | | | | | | | | | |
| Dijen achter | 42 | | | | | | | | | |
| Bot | 36 | | | | | | | | | |
| Schouderbreedte | 23 | | | | | | | | | |
| Ruglijn | 23 | | | | | | | | | |
| Voorbenen z.v. | 27 | | | | | | | | | |
| Voorb. zij-aanz. | 25 | | | | | | | | | |
| Achterbenen z.a. | 21 | | | | | | | | | |
| Achterk. zij-aanz. | 25 | | | | | | | | | |
| Spronggewricht | 29 | | | | | | | | | |
| Beweging | 25 | | | | | | | | | |
| Schofthoogte | 38 | | | | | | | | | |

INDEX GÉNOMIQUE SUR LA COTATION LINÉAIRE FR_FR



| | Idx | R ² | Orig. fr_FR |
|------------------|-----|----------------|-------------|
| Huid | 107 | 79 | G |
| Lengte | 90 | 82 | G |
| Borstbreedte | 105 | 84 | G |
| Bekkenbreedte | 101 | 87 | G |
| Schouder | 109 | 89 | G |
| Rug | 106 | 88 | G |
| Rib | 102 | 84 | G |
| Kruis | 106 | 85 | G |
| Bekkenlengte | 92 | 78 | G |
| Staartinplant | 86 | 83 | G |
| Dijen zij | 108 | 90 | G |
| Dijen achter | 103 | 89 | G |
| Bot | 98 | 77 | G |
| Schouderbreedte | 91 | 56 | P |
| Ruglijn | 78 | 72 | G |
| Voorbenen z.v. | 105 | 62 | P |
| Achterbenen z.a. | 86 | 59 | P |
| Spronggewricht | 93 | 82 | G |