

Amuse

From the Lead Mae family



Raymau Bstar Monica VG89
(s. To-Mar Blackstar)

Whittier-Farms Lead Mae-ET EX95
(s. Rothrock Tradition Leadman)

Marwil Leadmae 1 VG88
(s. Regancrest Elton Durham)
102,067 kg M 4.39 3.62

Marwil L M Alexia VG89
(s. Braedale Goldwyn)
46,539 kgM 5.55 3.61

J H S Holsteins LM Alexia 22 VG87
(s. Picston Shottle)
18,679 kgM 4.28 3.05

J H S Holsteins LM Alexia 42 VG85
(s. Generations Epic)
45,250 kgM 4.67 3.72

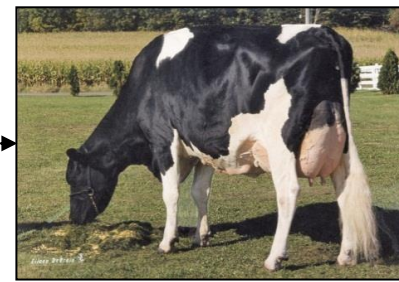
de Heerenhoeve Delta Amuse
(s. Apina Malcolm)

Delta Afke VG89
(s. Delta Inductor)
66,791 kgM 4.66 3.82

Delta Anca GP84
(s. Louxor)
40,608 kgM 3.64 3.62
still in production

Delta Amuse
(s. Delta Frontline)

Delta Morgan
(s. KAX Gladius)



BETTER COWS > BETTER LIFE

Morgan

From the Lead Mae family

