



Associazione Nazionale Allevatori Bovini Italiani Carne

anabic



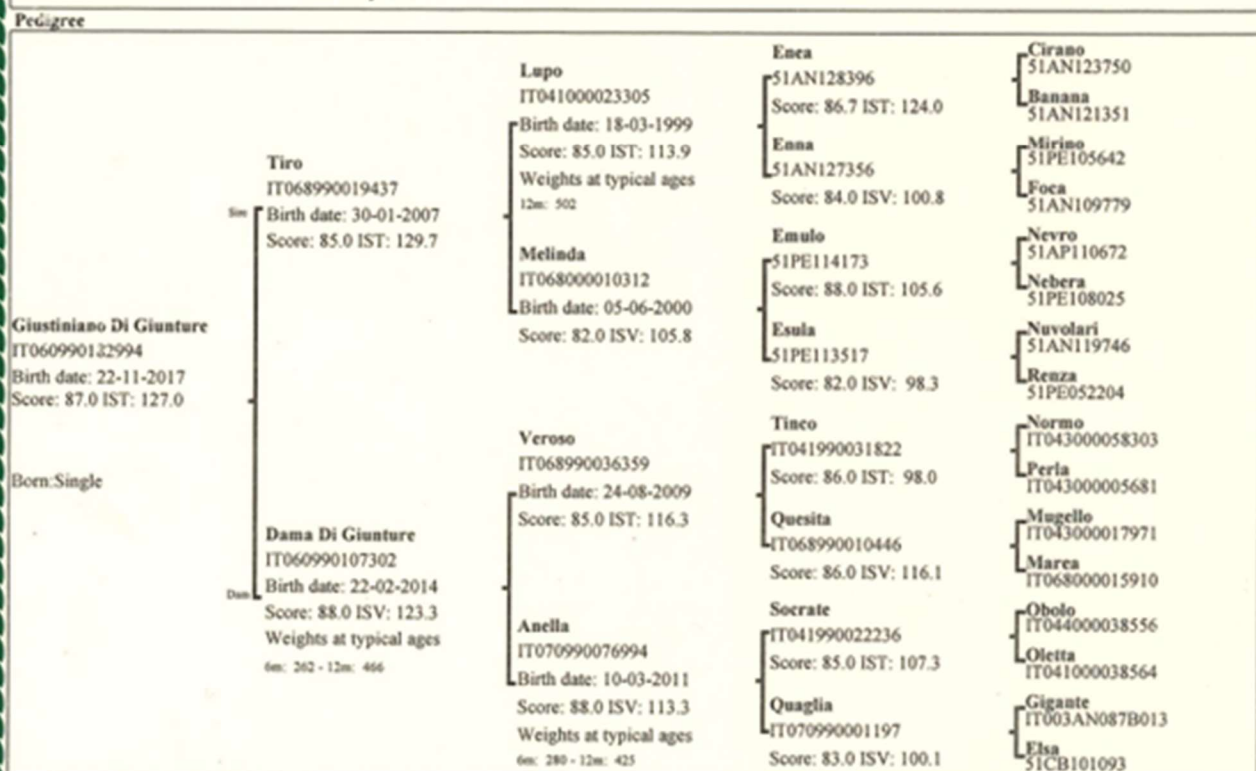
N. 122145

International Semen Pedigree

Breed	Name	Ear Tag	Gender	Birth Date
Marchigiana	Giustiniano Di Giunture	IT060990182994	M	22-11-2017

Breeder	5643159	COSTANTINO ENZO	(FR)
Owner	5022599	C. TORI CHIACCHIERINI	(PG)

Genetic Indexes	
Bull Selection Index:	127.0 Accuracy: 61



Morphology

Rations				Muscle Development								Dimensions						
Breed	Muscle	Dimens.	Legs	Withers	Shoulders	Back	Loins	Rump	Thighs	Buttocks	Buttocks	Height	Trunk	Chest	Chest	Hip	Ischia	Rump
width	Dev.		struct.	width	Convex.	Width	Width	Convex.	Width	Convex.	Length	Length	Height	Height	Width	Width	Width	Length
M	O	O	B	5	5	5	5	5	5	4	5	5	5	5	5	5	5	5
Score				87								3 3						

Legs and Structure						Fineness		Rep. Char.		
Rump	Top	Fare	Legs	Hind Legs	Pasterns	Hooves	Skeleton	Skin	Udder	Testis
Angle	Line	Front	Side	Side	Angle	Direction				
3	3	3	3	2	3	3	3	3	3	3

Parentage Verification

DNA	Blood Groups	Sire	Dam
Genotype Deposited		Qualify	Qualify

The undersigned certifies that the particulars required by Article 2 of Commission Decision 2005/379/EC are contained in the documents attached: delivery note, animal health certificates.
Pedigree certificate issued in accordance with Commission Decision 2005/379/EC for intra-Community trade
The results of genetic test are available on the following web site: www.anabic.it

Date of Issue: 07-01-2019

